

2017 WISCONSIN SHOP HOP SECTION 2 MYSTERY QUILT

QUILT TOP ASSEMBLY INSTRUCTIONS

❖ Fabric 1

- Cut 8 strips – each $1\frac{1}{2}$ " x WOF for the inner border

❖ Fabric 2

- Cut 5 strips – $6\frac{1}{2}$ " wide x WOF for the outer border
 - From the first WOF strip, cut one $32\frac{1}{2}$ " strip and one $6\frac{1}{2}$ " strip
 - From the second WOF strip, cut a second $32\frac{1}{2}$ " strip and a second $6\frac{1}{2}$ " strip
 - From the third WOF strip, cut one $26\frac{1}{2}$ " strip and a third $6\frac{1}{2}$ " strip
 - From the fourth WOF strip, cut one $26\frac{1}{2}$ " strip
 - From the last WOF strip, cut one $24\frac{1}{2}$ " strip

❖ Fabric 5

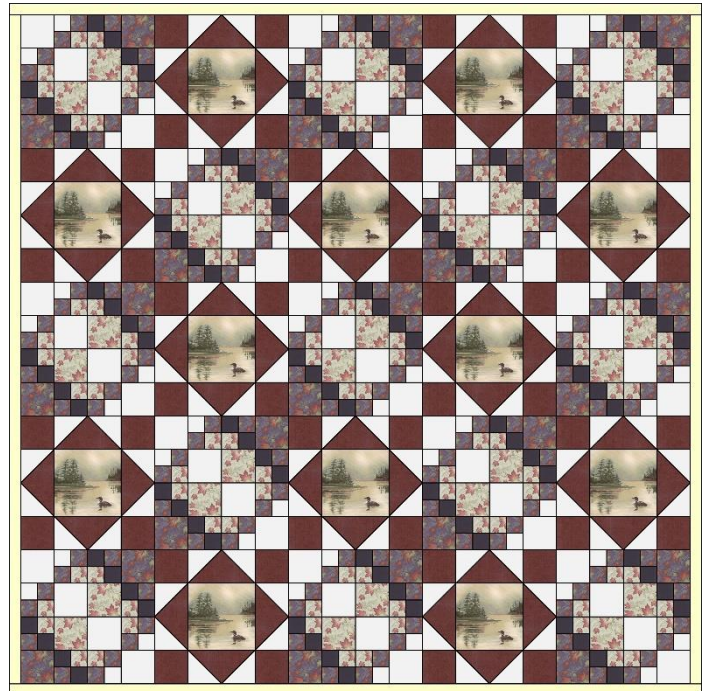
- Cut 8 strips – $2\frac{1}{2}$ " wide x WOF for the binding

❖ Inner Border

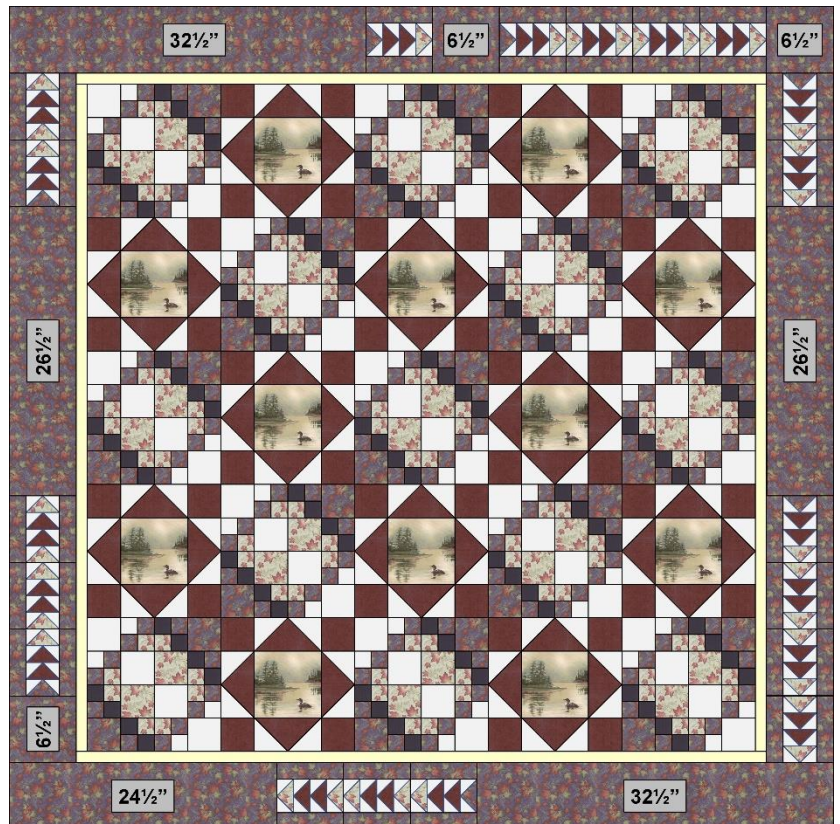
- Join all 8 strips of Fabric 1 end-to-end to form one long strip
- From the long strip, cut two strips each $60\frac{1}{2}$ " long and two strips each $62\frac{1}{2}$ " long
- Join one of the $60\frac{1}{2}$ " strips to each side of the quilt field as shown above at right
- Join one of the $62\frac{1}{2}$ " strips to the top and bottom of the quilt field as shown above at right

❖ Outer Border

- Join Flying Geese units with strips of Fabric 2 to form the side, top, and bottom outer borders as shown at right
- **NOTE: Pay careful attention to the Flying Geese Unit positions! Remember that there are two types of Flying Geese Units and place them correctly according to the diagram!**
- Attach the two side outer borders and then the top and bottom outer borders as shown in the diagram



Quilt Field With Inner Border



Quilt Field With Inner And Outer Borders

❖ Binding

- Join all 8 strips of Fabric 5 end-to-end to form one long strip
- Use the long strip to bind all four edges of the quilt top